



Head Start for Kent County

Connecting Families and Community Resources



2018-2019 Annual Report

A Message from the Board President



I am happy to share our 2019 Annual Report with you. The National Head Start Association (NHTA) began over 50 years ago with a mission to provide comprehensive preschool preparation for families and children living in poverty. Head Start for Kent County (HS4KC)'s Board of Directors and all the agency's employees are committed to provide the best comprehensive preschool experience. Besides early educational services and school readiness, our agency also offers the following: family support; mental health services, dental services, health and physical well-being services, special needs services, and nutritional services to the children and families in Kent County.

Partnerships with the Michigan Department of Education and the Kent Intermediate School District has allowed our agency to provide full-day preschool services for the majority of our children.

Also, a half day option is still available to some of our families. We are excited to continue the balanced calendar this school year, as well as the STEM School.

Leading our agency is Executive Director, MaDonna Princer. MaDonna is entering her sixth year as Executive Director. With the help of her staff, MaDonna has positioned HS4KC as the best in providing these comprehensive services to our families as compared to similar agencies throughout the state and the region. She has also led our growth. We look forward to providing services in the Alger Heights and East Leonard neighborhoods this coming year. We are also excited to open four Infant-Toddler Early Head Start classrooms this year.

As our agency begins the upcoming program year, I would like to thank all our devoted Head Start staff that make this possible. Our dedicated classroom teachers and teacher assistants do everything they can to make learning and every day experiences fun and enjoyable for all our children. Family Advocates, bus drivers, custodial staff, food preparation staff, and many others work tirelessly to provide the consistent care and assistance that our families deserve. Additionally, the dedicated members of the Parent Policy Council continue to help the agency make decisions that impact their families as well as the agency as a whole.

As you read this report, you will discover that HS4KC provides a variety of comprehensive services to assist each child and family. Additionally, each Head Start site in Kent County is Nationally Accredited. We are also grateful for all our community partners.

Lastly, I would like to thank the Head Start families and children that have chosen HS4KC for their child's education. While there are many options for early childhood education in the West Michigan area, I believe there is none better than ours.

I am looking forward to another productive and outstanding year.

Sincerely,
Rudy Gutierrez
Board President

A Message from the Executive Director



Dear Community:

It is hard to believe that another year has gone by. We are once again excited to share our annual report with you. The 2018-2019 year was a success! We continued to work closely with our community partners and parents to ensure children gained necessary skills to succeed in school and beyond.

We had two very exciting funding opportunities during the year. First, we successfully secured additional funding for duration through the Office of Head to increase the number of children who will be able to receive an extended school year. Currently, 27% of children enrolled at HS4KC are in classrooms that operate a longer school year. These new funds will take that number to 49%.

Second, we were awarded an Early Head Start Expansion grant that will bring the much-needed additional services for families with Infants and Toddlers to our community. This project will expand

our home visiting program and also allow us to open four EHS classrooms. These additional services will begin with our 2019-2020 school year.

At HS4KC, we are honored to be part of Kent County's Early Childhood system. We continue to work with our parents and the community to provide the highest quality programming. Thank you for being part of our success and we look forward to what's next. Please feel free to reach out with any comments or questions.

Sincerely,
MaDonna J Princer
Executive Director

Our Board



Linda Pickett
MaDonna Princer

Dean Pacific
Brian Hofstra

Joann Hoganson
Fredericka Brown

Oogie LaMar
Kristy Greenberg

Not pictured

Rudy Gutierrez

Jessica Turk

Tammy Smith

Lauren Stanton

Our Policy Council



Shawn Hernandez
Fredericka Brown
Lacy Lopez

Julie Young
Bonnie Ingersoll
Amber Rhoads

Cara Sutcliffe
Esther Mang Nu
Nicole Dombrowski

Brenda Ocampo
Lianna Tagle
Katie Monk

Not Pictured

Delaney Becker-Baratla
Gloria Bonilla
Charity Cooper
Ryan Cooper

Rebeca Davila
Hannah Gilliam
Lindsey Griffin

Ni Hniang
Travis Lasley
Courtney Posey

Jessica Turk
Kathryn Von Maur
Requita White

Mission

To deliver comprehensive services to low-income children five and under and their families, promoting their well-being and development.

Vision

To strive to provide comprehensive services through a highly trained staff, current technology, innovative programming and diverse community partnerships that will create a strong foundation for each child's future success.

Core Values

Integrity

Competence

Professionalism

Humanitarianism

Commitment

Respectfulness





Table of Contents

Governance	2
Mission, Vision, & Values	4
Program At-A-Glance	6
Community Needs.....	8
School Readiness	10
School Readiness Goals.....	11
Cultural Competency and Inclusion.....	14
Strategic Outreach	15
Parent, Family, and Community Engagement.....	16
Health	20
Wellness.....	22
Federal Review Highlights	24
Testimonials	25
What's Ahead	29
Finances	32
Community Partners	34



Program At-A-Glance



Sites: 11
Classrooms: 80



Full Day: 70

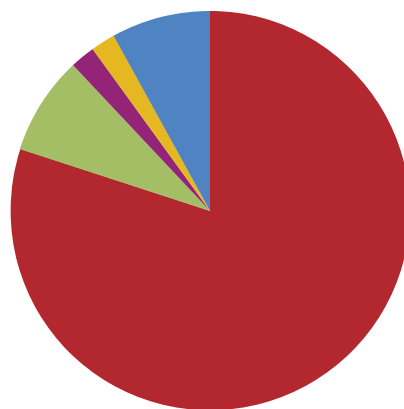


Half Day: 10

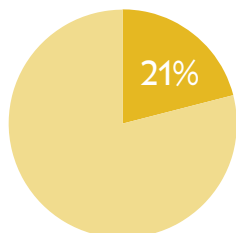
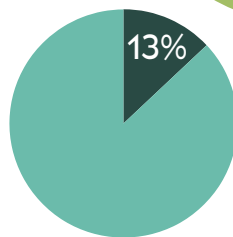


Student Eligibility

80% Poverty
7.8% Public Assistance
2.1% Foster Child
2.0% Homeless
8.0% Over-Income



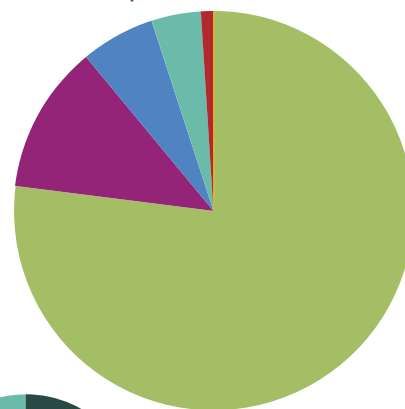
Children in the Preschool & Home Visiting Programs with Diagnosed Disabilities



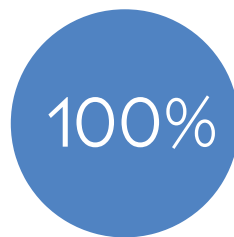
We serve 21% of all children aged 0-5 living below the poverty line through our preschools and Home Visiting programs

Primary Language of Family at Home

76.9% English
11.4% Spanish
6.4% East Asian
4.2% African
0.9% Middle Eastern & South Asian
0.2% Caribbean

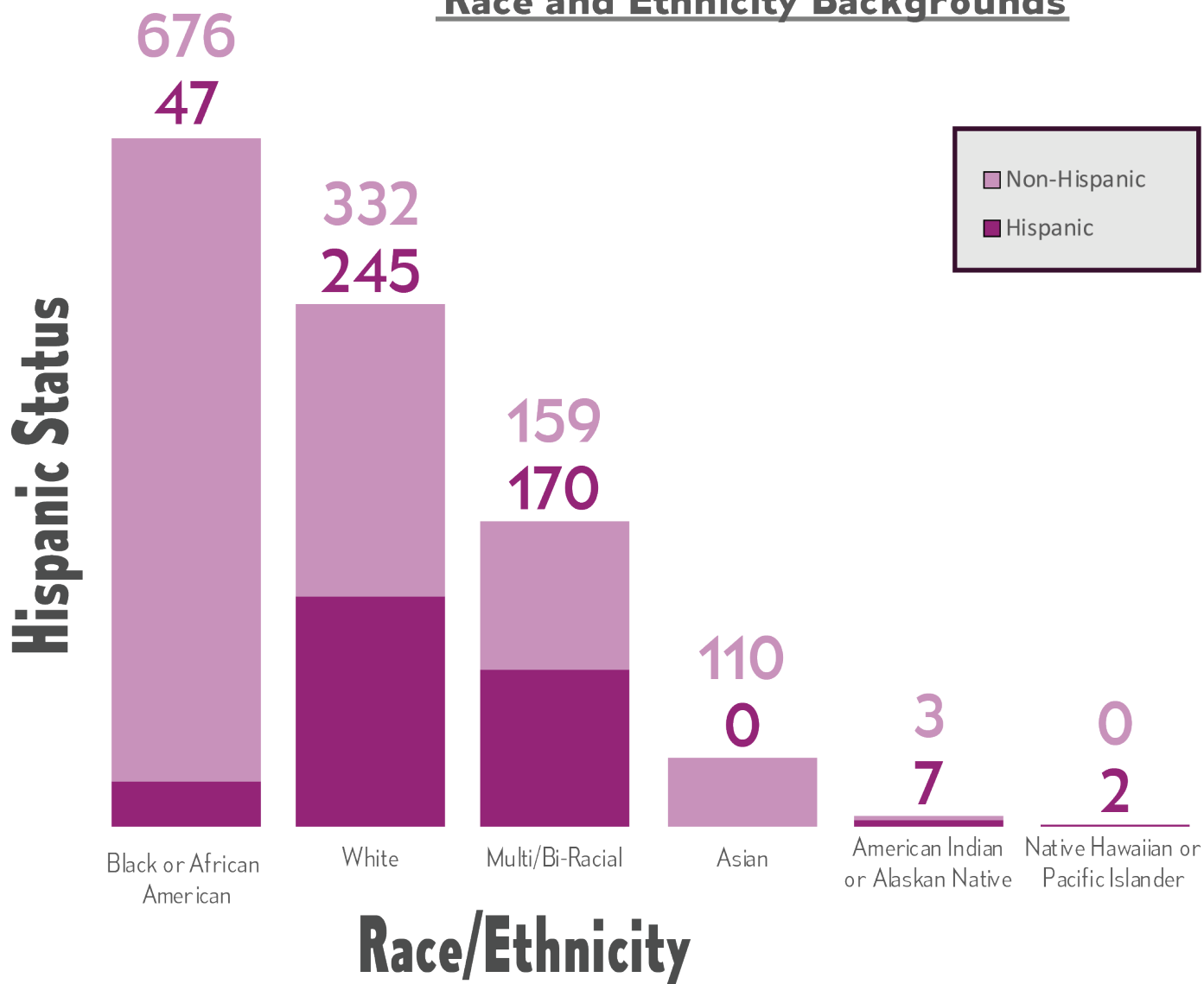


Funded Enrollment Slots





Race and Ethnicity Backgrounds



Community Needs

54% of 3 & 4 year olds
are not in preschool...



14% of families with children
under the age of 5 live below the poverty line.

47% of single moms with children
under the age of 5 live below the poverty line.

What does our community look like?
What needs are we trying to meet?

...and only **3%** of children ages 0-2
are receiving **Early On** care.



Kent County ranks **19th** out of 83 counties in the
State of Michigan for **Child Well-Being**.

Out of every 1,000 children, **almost 20** have been
confirmed victims of child abuse or neglect.

Head Start for Kent County's purpose is to help create a strong foundation for each child's future success in school and in life.



School Readiness

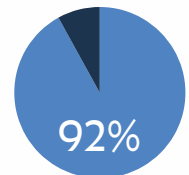
School Readiness Goals

Below are the school readiness goals that HS4KC has identified and how many 4-year-old children transitioning into kindergarten have achieved these goals according to our assessment standards.



Approaches to Learning

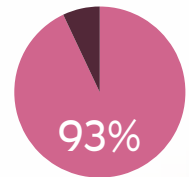
Children will show an interest in and persist to learn, create, and solve problems.



Social and Emotional Development

Children will develop a positive sense of self and regulate their own emotions and behaviors.

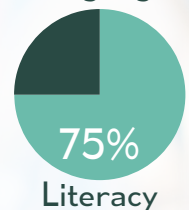
Children will engage in and maintain positive relationships with adults and peers.



Language and Literacy

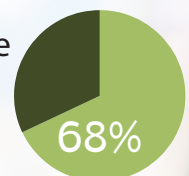
Children will develop increasingly complex language for use in social conversations and as a basis for literacy skills.

Children will build and use varied vocabulary while identifying and discriminating smaller units of sounds in words; rhythm, rhyme, alliteration, and book appreciation.



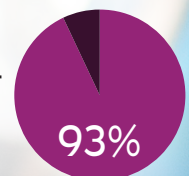
Cognition (Mathematics)

Children will explore and discover their own environments while developing an understanding of shapes, sizes, quantity and patterns.



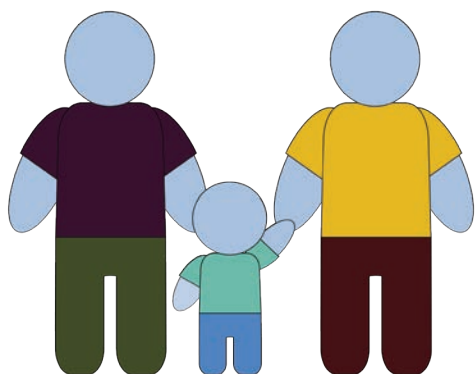
Perceptual, Motor, and Physical Development

Children will demonstrate control of large and small muscles for movement including balancing and navigation skills.



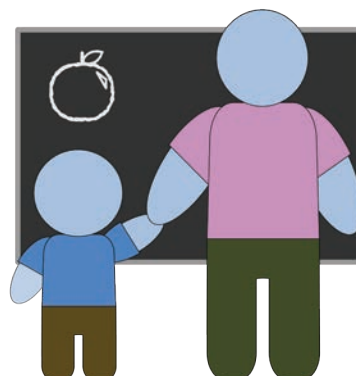
How Do We Achieve School Readiness?

Families



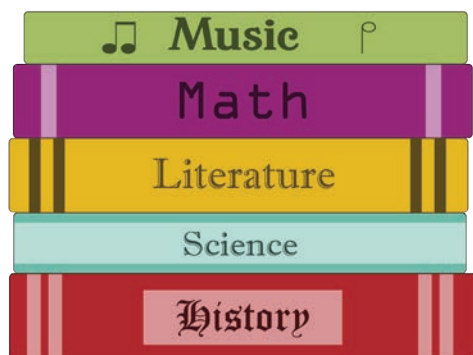
We use a comprehensive, holistic, two-generational approach that focuses on both the child and the parents.

Teachers



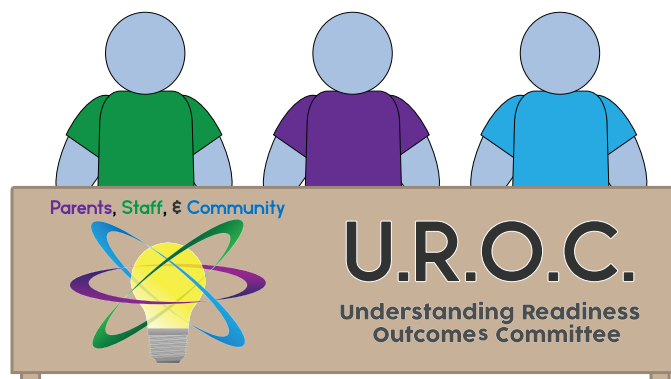
Teachers work with parents to develop individualized learning plans for each child.

Curriculum



We use The Creative Curriculum® for Infants, Toddlers, & Twos, The Creative Curriculum® for Preschool, and MyTeachingStrategies™, GOLD® to assess and support areas of development essential to school readiness. Twelve classrooms participated in a pilot of the Connect 4 Learning Pre-K curriculum.

Committee



A committee focused on Understanding Readiness Outcomes for Children (UROC) meets quarterly to review the progress that children and families are making towards our school readiness goals. This committee strives for representation of parents from every site, staff across each department, and key community members in the education field.



The **Classroom Assessment Scoring System (CLASS)** is an observation tool designed to assess teacher-child interactions rated on a **7-point scale** ranging from low to high. CLASS is divided into three domains:

Emotional Support, Classroom Organization, and Instructional Support.

The CLASS uses **research based insights** to improve how teachers interact with children every day to cultivate **supportive, structured, and engaging classroom experiences** which are proven to drive learning and high quality classroom environments. CLASS assessment data is used to set goals while informing coaching and professional development.



Head Start for Kent County joined with multiple child-focused, local community organizations to launch **Kent County Success Basics**, an early childhood development awareness initiative that provides information for helping parents support their child's readiness for school in the first five years.

These strategies come from research conducted by the **Achievement Gap Initiative** at **Harvard University**. This information is integrated throughout our program.



LOVE
MAXIMIZE LOVE
MANAGE STRESS



COUNT
GROUP AND COMPARE





TALK
SING AND POINT



PLAY
EXPLORE THROUGH
MOVEMENT AND PLAY



READ
AND DISCUSS STORIES



Cultural competency is a process of learning about and becoming allies with people from all cultures.



Cultural Competency and Inclusion

We believe the key to inclusion is going beyond welcoming every culture, ensuring every individual feels a true sense of belonging.

In 2017, HS4KC hired their first **Cultural Competency and Inclusion (CCI) Manager** whose primary job is to support the agency as they continue to grow in diversity amongst staff and the families they are serving.

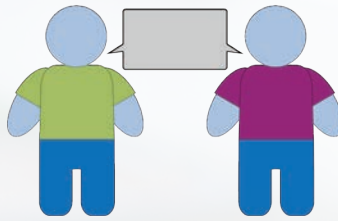
The key to becoming more culturally competent is to **respect** the ways others live in and organize the world, and show an **openness** (or willingness) to learn from them.

CCI Workgroup Focus Area Goals



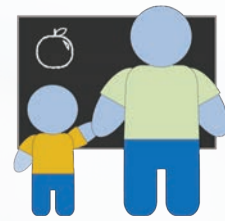
Community Partnerships

Increase bilingual volunteers to strengthen the support provided to all enrolled families



Communication

- 1) Increase translation of communication to families in their preferred language
- 2) Ensure staff is respectful and considerate in all communication to families, students, and employees



Teacher-Child Interactions

Ensure teachers can confidently identify and articulate teaching strategies used to match each dual language learners' level of English development

Recruitment and Retention Strategies

One of our goals is to recruit and retain high quality staff that reflect the children and families we serve. We assess the Agency's representation of minorities on a regular basis to help us identify the opportunities for and barriers against increased diversity and inclusion of our staff.

Mentorship Program

HS4KC believes in "growing our own" employees. Research shows that mentorship programs provide a more engaged workforce, job satisfaction, and inclusion of traditionally marginalized employees. To that end, the HS4KC Mentorship Program was implemented in 2018-19 and offered to all eligible employees.



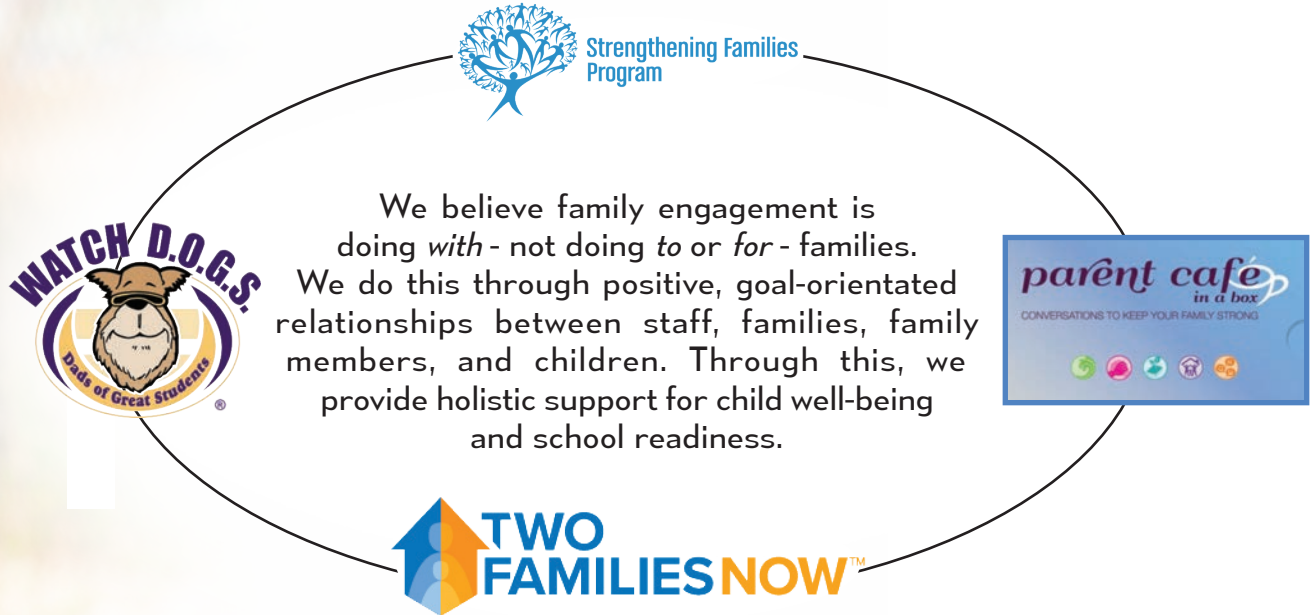
Strategic Outreach

Under the direction of CCI, the Strategic Outreach Committee amplified its efforts in 2018, wanting to continue increasing its ability to effectively deliver consistent messages to both key audiences and partners. In 2019, we welcomed a Strategic Outreach Specialist, who has helped to boost our brand awareness, including our annual report.



Parent, Family, and Community Engagement

Elements of P.F.C.E.



Family Engagement is Everyone's Business!

These engagement opportunities give families a chance to network with each other, build their parenting skills, learn more about how to support their children, and much more.

Strengthening Families Program

Attendees participated in our Strengthening Families 8-week program, which offers participation and leadership opportunities.

Parent Café

Parents attended our Parent Café events to further develop their parenting skills through collaboration with staff and other parents.

Watch D.O.G.S.

107 Male Parents/Guardians participated in our Watch D.O.G.S. program, which provides father figures opportunities to offer additional contributions.

Two Families Now

Our Two-Families Now program works with parents living in separate homes in order to support them in developing their co-parenting skills. Multiple families have benefited from this program.

Engagement

Engagement is a year-round effort! We host activities to keep kids and families engaged, including our "Rock the Park" events with reading, rock painting, bubbles, and more!





Why we use Parent Gauge™

Parent and family engagement is an important element of HS4KC's work. However, so far, programs have lacked a valid, evidence-based tool to measure these efforts. Parent Gauge™ allows us to take parents' own words and concretely measure whether or not our efforts are meeting the needs of our families and further their learning and growth.

The creation of Parent Gauge™ was initiated by the Region V Head Start Association and the National Head Start Association, with support from the Kenneth Rainin Foundation and the Ford Foundation. Developed by the NORC Center at the University of Chicago, it is a scientifically validated instrument that was piloted with Head Start programs on a national level. Parent Gauge™ will continue to mature using the data collected. Plans include the eventual use of Natural Language Processing to analyze open-ended parent responses and provide insights into family engagement as well as program improvement.

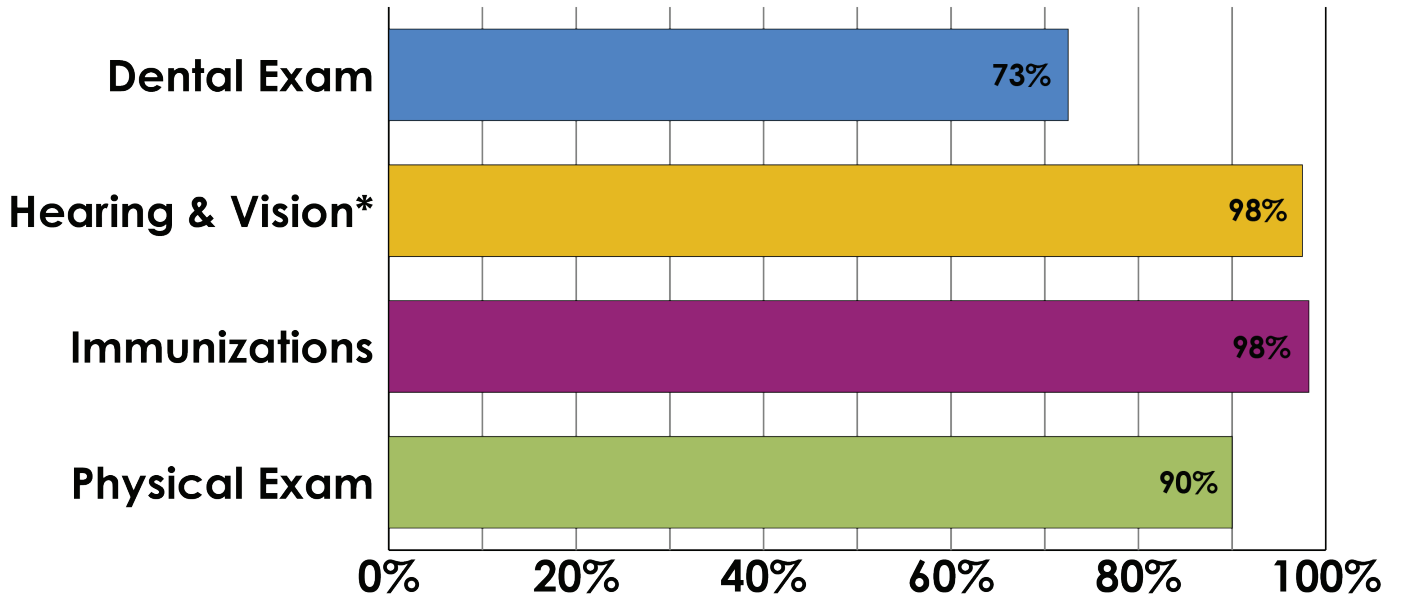
<https://nhsa.org/our-work/initiative/parent-gauge>

Head Start for Kent County emphasizes the importance of ongoing preventive care and early detection of health problems. We offer services that support families and strengthen communities so that children are healthy, safe, and ready to learn.

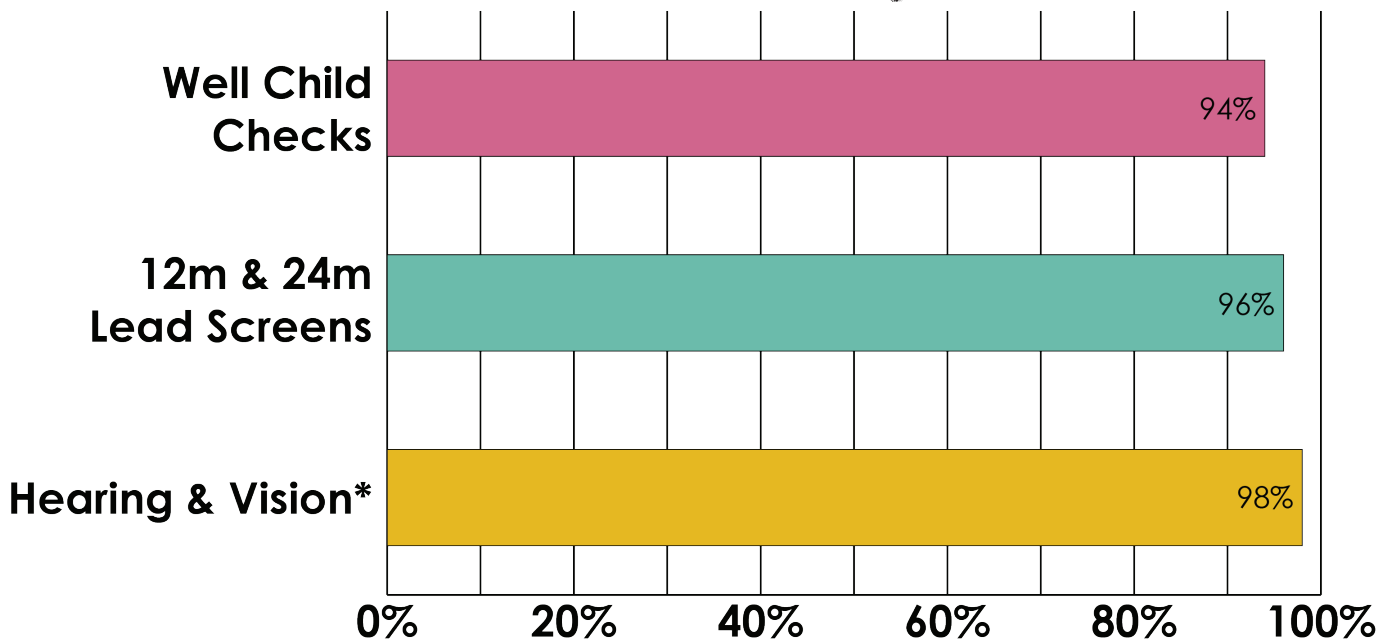


Health

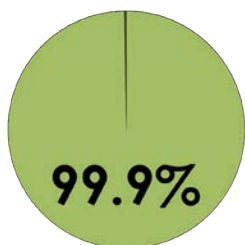
Preschool



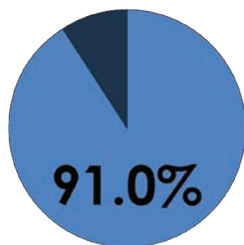
Home Visiting



Students with an ongoing source of continuous, accessible care



Medical



Dental

*Required that children newly enrolled to the program must have their hearing and vision screened within 45 days of starting.

HS4KC partners with the Kent County Health Dept (KCHD) so that children are screened either by a KCHD Hearing/Vision technician or by an Agency Nurse.

Wellness [wel·nis]

Noun

1. The quality or state of being healthy in body and mind, especially as the result of deliberate effort.

Wellness Committee

The mission of the Wellness Committee is to inspire, create, and maintain a workplace environment that supports the healthy lifestyle choices each person.

In 2017, we created the HS4KC Wellness Committee. This committee holds monthly planning meetings that include Wellness, Physical Activity, "Sharing Good News", as well as other wellness activities and/or initiatives.

Jeans Stickers

Staff may wear jeans once a week when they participate in wellness activities (as aligned with the dress code policy).

Orange Frog

Orange Frog Workshop: Leading Positive Performance™ is an on-site experiential workshop that teaches the science of sustainable peak performance.

Hold It for the Holidays

From Thanksgiving through the Super Bowl, staff are challenged to gain no more than 2 lbs above their starting weight during the holidays. This year, 77 staff participated - up from 59 participants last year.

The Wellness Pledge

Staff may pledge to follow 3 healthy habits for 12 weeks. Individuals choose what habits each of them want to work on. The focus is holistic, meaning staff chose their own focus: mental, physical, spiritual, financial, etc. In the last Wellness Pledge, we had 135 participants.

End of the Year Event

Speakers are brought in to present wellness topics. Physical activity is provided in the form of a 5K, yoga, dance, and yard games, and healthy make-it/take-it snack.

Did You Know?

- We provide breakfast, lunch, and snacks to 1,426 children (Monday-Thursday).
- We create all recipes in-house and have a licensed commercial kitchen at our Central Office where all our meals are produced.
- Snacks once a week (on Thursdays) are food experiences where these children get to explore new foods. They participate in the prep and servicing of the foods to explore the texture, shape, smell, and taste. Each food experience has a related mini-book, which incorporates the recipe, science, vocabulary, Zoo-Phonics, fun with textures, I'm Moving, I'm Learning, and books to read.
- We provide in-home snacks for Early Head Start home visits and sponsored events.
- We provide special diets for children due to medically documented food allergy and/or intolerance.

During the 2018-2019, we provided
(on average monthly):

14,262 breakfasts

14,672 lunches

14,912 snacks



Federal Review Highlights

Every five years, the Administration for Children and Families (ACF) conducts a federal review of Head Start for Kent County. In 2019, we received a glowing review. Here are some highlights from the report on a few distinguished areas within our program.

Program Design

Head Start for Kent County's Leadership understood the importance of developing and implementing diversity, equity, and inclusion (DEI) strategies into the everyday operations of the program. The Executive Director quickly realized that to support those efforts in a holistic and meaningful way, they needed to create a full-time position. **In 2017, the agency hired their first Cultural Competency and Inclusion Manager whose primary job is to support the agency as they continue to grow in diversity amongst staff and the families they are serving.**

Refer to pages 14-15 for more information on Cultural Competency & Inclusion

Enrollment

HS4KC initiated a collaboration with the Kent Intermediate School District to restructure and revise the **joint recruitment and intake process** for the 2018-2019 school year. **In the first year of implementation, there were more enrollments in the spring than they ever had county-wide.** With the support of leadership and data derived from the Community Needs Assessment, the Eligibility, Recruitment, Selection, Enrollment & Attendance department developed one community intake application available online. This ensured they were reaching and providing high-quality early childhood education to all eligible children in Kent County.



This joint recruitment process has been essential in creating an efficient collaboration with all early childhood education programs in Kent County.

Safety Practices

In 2016, the grantee contracted with Smart Tag to implement a transportation tablet solution. **Smart Tag was originally developed for public school systems, and the grantee is the first Head Start in the country to have implemented this technology.**

Parents can create an account which allows them to view the GPS location of the bus while their child is on it. They can sign up to receive optional text alerts when the bus is approximately 10 minutes away from the stop.

They are also able to view who received the child from the bus within seconds of the actual release. Additionally, parents can also manage their list of approved adults, which is available to the driver as soon as 30 minutes before the child boards the bus. The implementation of this new technology has allowed the grantee to increase the data shared with their stakeholders and has created a significantly safer and more efficient department.





Testimonials

We spoke with Annemarie Valdez, the current President/CEO of First Steps Kent, on her experiences with Head Start as a child in inner city Detroit. The following testimonial is a summary of her story.



As a child of immigrants, being around other immigrant and diverse children made me feel more normal.

"I grew up the youngest child of a large immigrant family in inner city Detroit. Head Start began as part of the War on Poverty, which was the Johnson and Kennedy Administrations' attempt to fix generational poverty within the inner cities. This not only focused on poverty, but also on immigrant families. In Detroit, in particular, the focus was on African American and Latino families living in poor neighborhoods of the inner city. My older sister heard about the program and told my parents about it.

At the time, Head Start was only a summer program. Enrolling in Head Start for the summer allowed my mother to work stress-free, since she knew I was in a safe, structured environment. As a child of immigrants, being around other immigrant and diverse children made me feel more normal, and less afraid of school and going into kindergarten. Through this program, I was given the opportunity to use materials that my family was too poor to afford, like crafting supplies such as scissors and glue. Those were things I had never even seen before.

In college, I realized that Head Start got it right--that family and parental involvement is key. If we intervene early with our children, helping children and families thrive, then that thread continues, and helps families stay involved long after the child is no longer in the program.

To find out that you could have a career doing that really changed my world. I thought, Wow, you can do this for a living? I would love to do that for a living!

I learned that there was a gap in funding between the available programs and the remaining needs of our community. This is what inspired me to work with First Steps Kent and to help raise money to fill this gap.

Getting children ready for kindergarten and school is so important. The family support that Head Start and other programs provide is key. Head Start opened up my world and helped me realize new possibilities for my future."

~ Annemarie Valdez | President/CEO of First Steps Kent



Thanks to Head Start for Kent County, my daughter Hailey was able to get her dental treatment.

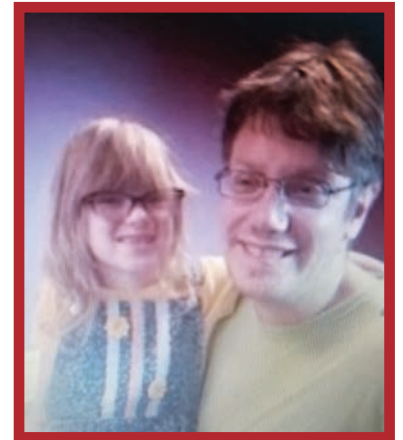
Being on a \$4,000 monthly deductible, I was having a hard time with the Medicaid down payment to cover the treatment. I am very thankful for the agency nurse who informed me that the agency would be able to cover the deductible for me. She went above and beyond for us to make it an easy experience.

~ Alejandra Villanueva / Mother of Hailey, a 4-year old at South Godwin

As I think about Head Start, I remember the times I spent with my kids in school and doing Strengthening Families. I think Head Start has been there to help us get where the kids are today. We have a 7 year old that is growing up a lot to be a fun girl and a little rocket. Zack is 5 and I hope he goes to Townline [Elementary].

I think Head Start has joined our family by meeting us where we were, giving advice and giving us clothes that we needed. I sure will miss how close Head Start got to us.

~ Tony G. / Strengthening Families and WATCH D.O.G.S. volunteer



Head Start for Kent County has been incredibly helpful to my family and I. My son has grown astronomically in speech, language and cognitive thinking.

Personally, being involved in Parent Cafés as a participant and a leader has shown me the similarities in many families' challenges and victories. In a social media driven culture, connecting to parents that may do things different from myself has encouraged a brighter picture of my own family by recognizing that every family and individual has a unique set of challenges to overcome.

~ Katie M. / PPC rep and current Parent Café Leader



English is my second language. Although my English has developed and my 'accent' has faded away over the years, I remember when it was hard to communicate with my peers. Head Start granted me the opportunity early on to strengthen both of my languages.

Ms. Phyllis, my Head Start teacher, was phenomenal--kind, nurturing, and respectable. She and my mother, who was a Head Start teacher for over 30 years, paved the way for me to thoroughly enjoy education.

I went to college with the goal of working for Head Start myself – to help at-risk families and support them in promoting school readiness and empower them to be successful in school and life.

I graduated from Michigan State University with a degree in Family Community Services with an emphasis on young children. Soon after, I applied to Head Start for Kent County and acquired a job as a Family Service Worker. I have since gone back to school in order to achieve a Master's degree in Early Childhood Education from Grand Valley State University.

After recent promotions, I now serve Head Start and its families as the Site Administrative Manager and I get the privilege of working alongside Phyllis Love in the Site Administration Department. Both she and my mother continue to work for Head Start for Kent County in different capacities, but with the same goal--helping children and families by giving them a Head Start.

~ *Ebony Gonzalez-Pugh | Site Administrative Manager at Head Start for Kent County*

Growing up, I was a student that hated school and skipped it every chance I got. Becoming a father, I changed a little bit to where I want my kids to learn everything they can. I am a shy adult - when I heard about WATCH D.O.G.S., I was hesitant at first, but decided to try it one day for my son. I ended up being at the school at least three times a month!

It's amazing how much kids learn from doing simple tasks and crafts. To know and see how my son interacts with other adults and kids is great. All the children loved when I came in. They all wanted to show me their new shoes or clothes; sometimes they just want to sit and talk about toys.



It helps the teachers and staff out, but it also helps you as a parent to learn all the tricks and songs they do at school, because if you bring that knowledge home, it will help make every day better with your child. The best part? It was free - you just needed the time, which could be 5 minutes to 3 hours. The choice is yours.

~ *Travis J. | Head Start parent, WATCH D.O.G.S., and UROC volunteer*



What's Ahead



Early Head Start

In the 2019-20 school year, we are excited to open four Infant-Toddler Early Head Start classrooms. HS4KC was successful in securing a competitive grant from the Office of Head Start in late spring of 2019 to add this program option to our services.

For many years, our community needs assessment highlighted the lack of quality center-based services for infants and toddlers in Kent County. Little to no services exist within some of the most vulnerable areas of greater Grand Rapids.

Beginning in the fall of 2019, thirty-six children and their families will begin receiving quality, comprehensive center-based infant-toddler services.

New Buildings

Head Start for Kent County will open two new facilities for the 2019-2020 program year to help us expand not only the number of full day, but also the number of extended year options. When the facilities are in operation, we will have 88 Head Start and 4 center-based Early Head Start classrooms county-wide. Should additional funds become available, the long-term lease agreements enable us to increase the three remaining half-day classrooms into full-day or additional Early Head Start center based rooms. The locations are:

Alger Head Start *256 Alger St. SE* *Grand Rapids, MI 49507*

Alger Head Start is located on the Southeast side of Grand Rapids. The majority of children served by this location were originally bussed to a Wyoming site. This location will allow the children to remain within the community they reside in.

It is a 25,725 square foot building with 10 classrooms, a gymnasium, multiple offices and conference rooms, and a kitchen. The building's rear courtyard is a perfect location for the new outdoor play area.

The facility was originally built in 1950 as a private elementary school. In 2011, the school went through a major renovation and was reopened as a charter middle school. As one of our extended program year options. Alger will have seven Head Start classrooms and one Infant- Toddler Early Head Start room.

We will be able to utilize the facility's three out buildings as a conference room, computer training room, and a mobile office space for our staff that transition throughout the county.

Leonard Head Start *1708 Leonard St. NE* *Grand Rapids, MI 49505*

Leonard Head Start is located on the Northeast side of Grand Rapids--an area we have been trying to place a facility as early as 2005.

When this facility opens, children will be able to receive services within a close proximity to their community. Currently they are bussed to a Southeast location or a location in Plainfield Township.

It is a 5,082 square foot building. When renovated, it will contain office space, 4 classrooms, and a gross motor room. It sits on a double lot with a large fenced in outdoor play area.

The facility was built in 1970 and was most recently was operated as a daycare. Leonard will operate on our traditional year schedule for the upcoming program year.

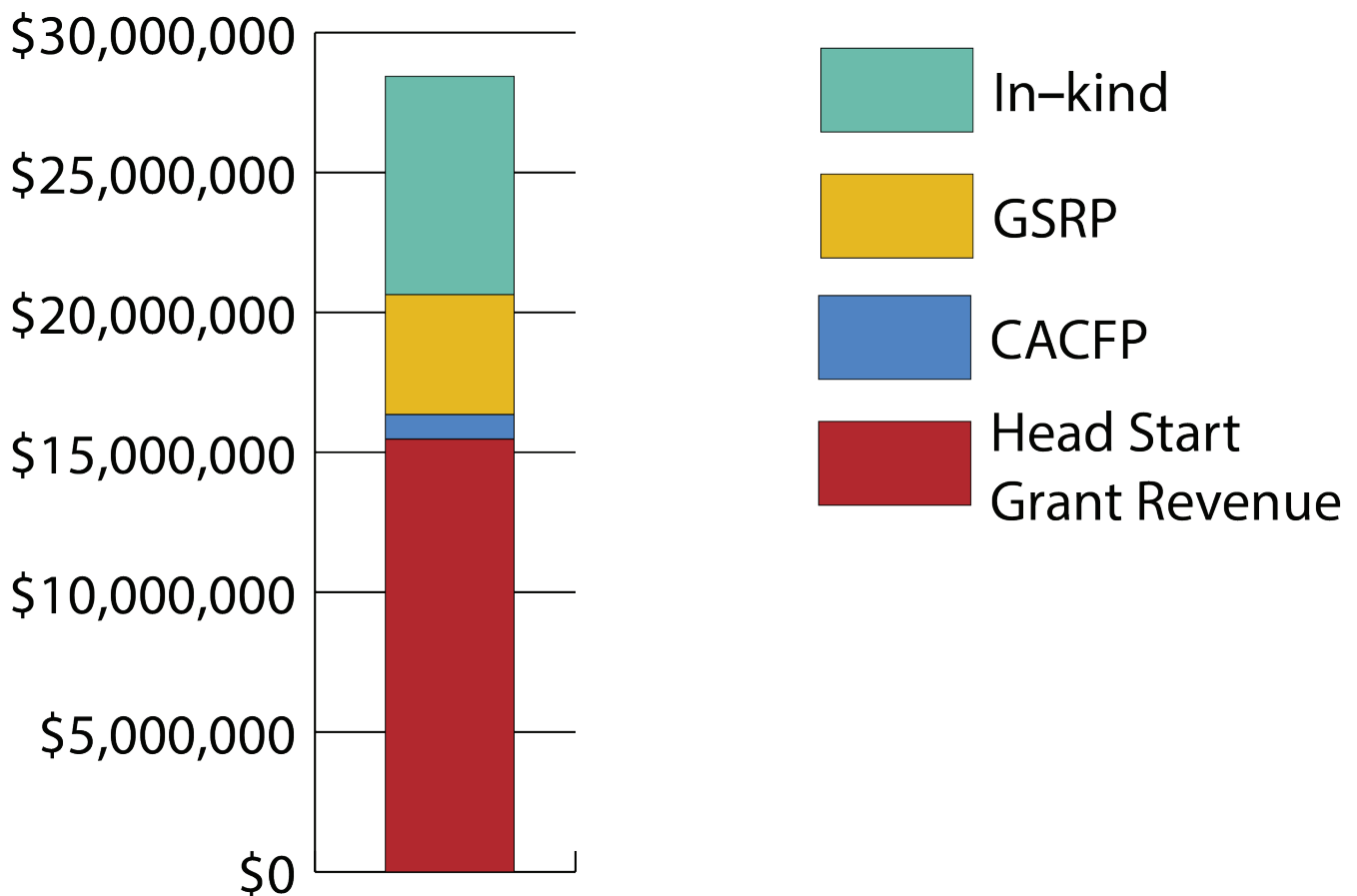
Finances

Audit

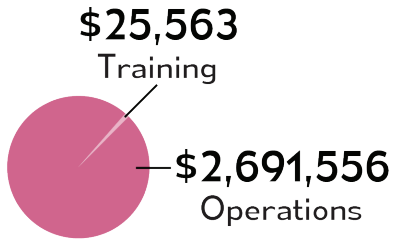
An independent audit, completed for the year ending December 31, 2018 by Vredeveld Haefner resulted in an unqualified opinion. The financial statement presented fairly, in all material aspects, of the financial position of Head Start for Kent County as of December 31, 2018. This audit provides assurance that the financial statements are free of material misstatement and reviews the internal control over financial reporting for compliance with certain provisions of laws, regulations, contracts, and grant agreements.

No deficiencies or instances of noncompliance were found. For a copy of the complete audit report and accompanying notes please contact our Controller, Nancy Priebe.

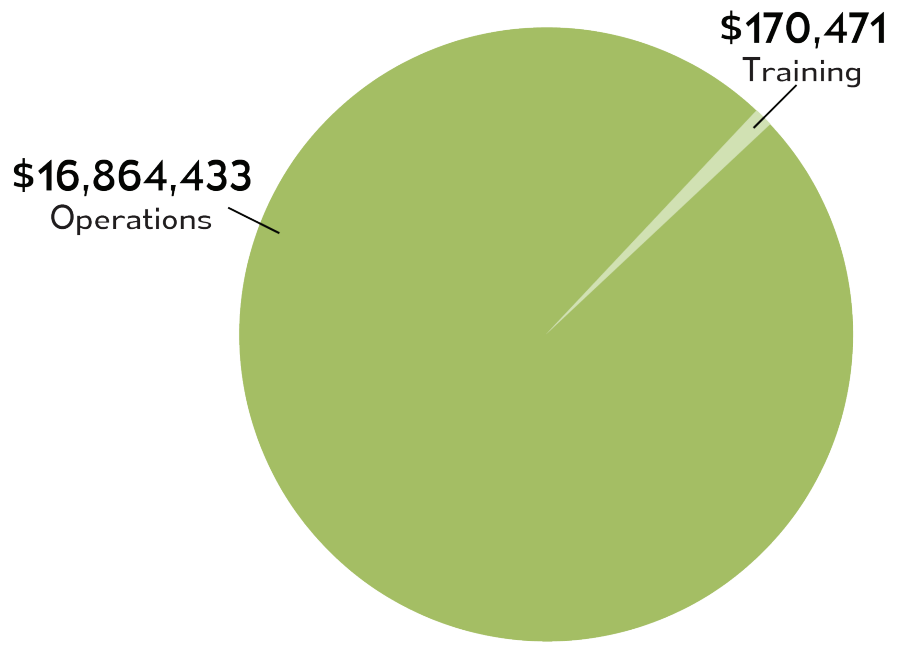
2018 Public and Private Funds



Funding Notice:
\$19,752,023

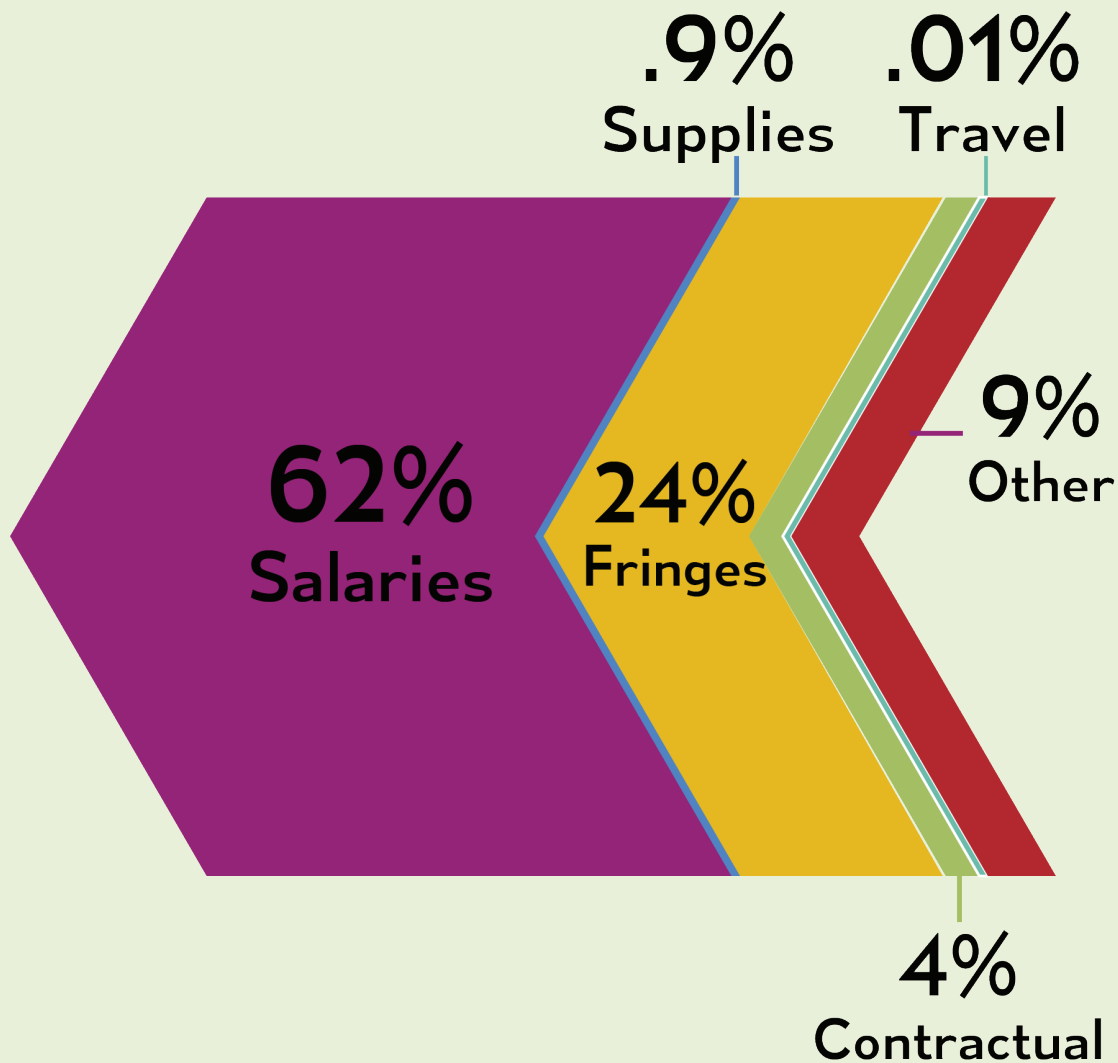


Early Head Start
\$2,717,119



Head Start
\$17,034,904

Expected 2019 Budget



Breakdown Chart



Community Partners

- American Red Cross of Greater Grand Rapids
- Arbor Circle Corporation
- Art Prize
- Baby Scholars
- Bethany Christian Services
- Calvin Church
- Calvin College
- Campfire of W.M.
- Catholic Charities
- Cherry Street Health Services
- Children's Assessment Center
- Community Rebuilders
- D.A. Blodget - St. John's
- Department of Communication Sciences and Disorders
Grand Valley State University
- Department of Human Services
- Early On of Kent County
- ELNC
- Family Futures
- Feeding America
- First Steps
- Frederik Meijer Gardens and Sculpture Park
- Gaines Pediatric Dentistry
- Goodwill Industries of West Michigan
- Grandville Pediatric Dentistry
- Grand Rapids Children's Museum
- Grand Rapids Community College
- Grand Rapids Housing Commission
- Grand Rapids Public Library
- Grand Rapids Urban League
- Grand Valley State University Health-Related Academic
Program Affiliation Agreement
- Great Start Collaborative
- Habitat for Humanity of Kent County
- Health Net of West Michigan
- Healthy Homes Coalition of West Michigan
- Help Pregnancy Crisis Center
- Hispanic Center of West Michigan
- Home Repair Services
- ICCF
- In the Image
- Kent County Health Department
- Kent District Library
- Kent Intermediate School District (KentISD) DATA
- Sharing Agreement
- Kent Intermediate School District (Kent ISD)
- Local Educational Agencies (LEAs)
- Kent ISD Adult Education
(Beckwith, Wyoming, Godfree Lee)
- Kent Vocational Options
- Kingma
- LINC
- Literacy Center of West Michigan
- Literacy Center of West Michigan
- Mel Trotter Ministries
- Michigan Head Start - State Collaboration Office
- Michigan Head Start Association
- Michigan State University Extension
- Michigan Works
- Mind Meets Music
- MOMS Program (Spectrum Health)
- Network 180
- Pine Rest Mental Health Services
- Pregnancy Resource Center
- Roosevelt Park Ministries
- Safe Haven
- Safe Kids of Greater Grand Rapids
- Salvation Army
- Samaritas/Lutheran Social Services of Michigan
- SECOM
- Senior Neighbors, Inc.
- South Ends community Outreach Ministries (SECOM)
- Sparta Adult Education
- Spectrum Health Healthier Communities
- Spectrum Health Healthier Communities (Spectrum
Health Maternal Infant Health Program)
- Strong Beginnings
- The Other Way Ministries
- United Church Outreach Ministry
- United Way
- Welcome Home Baby (Health Net of West Michigan)
- Welcome Home Baby, Business Associate Agreement
(Health Net of West Michigan)
- Western Michigan University School of Social Work
- Women Resource Center
- Wyoming Public Schools Special Education
- YMCA/YWCA



Head Start for Kent County

Connecting Families and Community Resources

